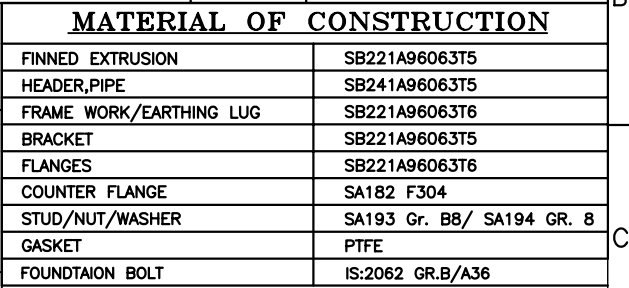
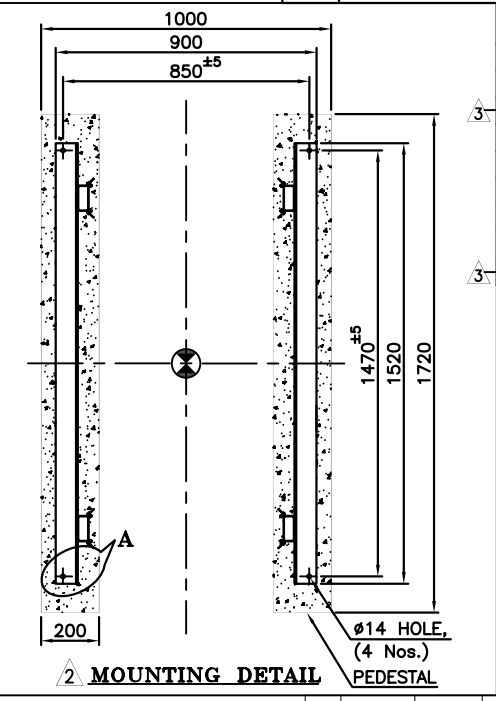
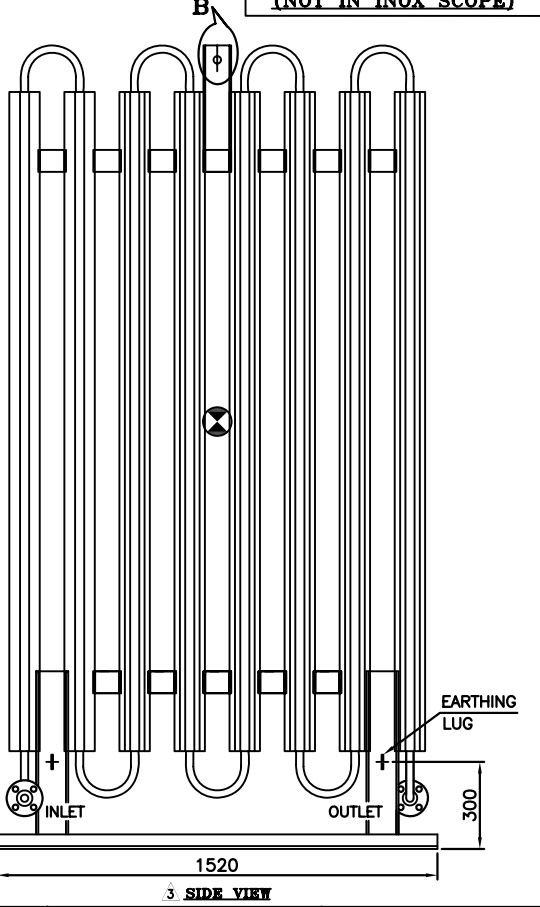
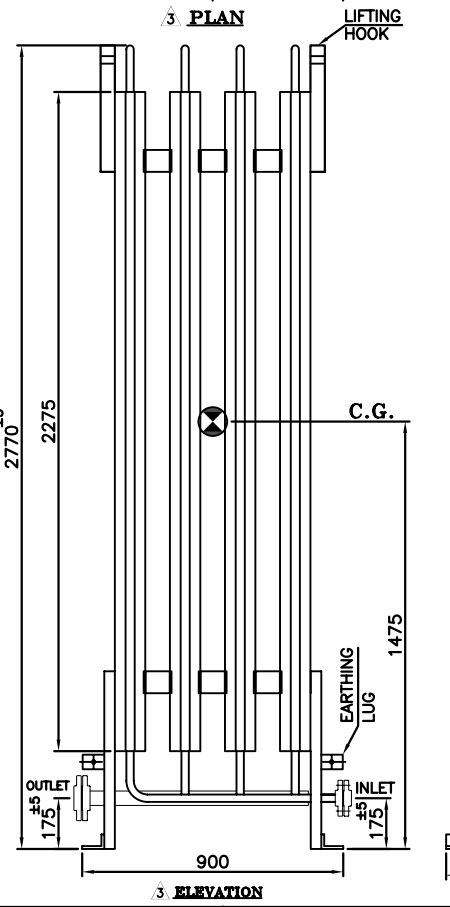


DESIGN DATA			
NO.	DESCRIPTION	UNIT	DATA
01	DESIGN CODE	---	ASME SEC VIII, DIV 1, ED.-2010
02	MAX. OPERATING PRESSURE	Kg/cm ² (g)	38.0
03	DESIGN PRESSURE	Kg/cm ² (g)	40.0
04	PNEUMATIC TEST PRESSURE	Kg/cm ² (g)	44.0
05	DESIGN TEMPERATURE	DEG. C	-196° to +65°
06	INLET FLANGE CONNECTION (SORF)	---	1" NB 300# (ANSI B16.5)
07	OUTLET FLANGE CONNECTION (SORF)	---	1-1/2" NB 300# (ANSI B16.5)
08	APPROXIMATE WEIGHT (EMPTY)	Kg	280 APPROX.
09	APPROXIMATE WEIGHT (OPERATING)	Kg	420 APPROX.

MATERIAL OF CONSTRUCTION	
FINNED EXTRUSION	SB221A96063T5
HEADER, PIPE	SB241A96063T5
FRAME WORK/EARTHING LUG	SB221A96063T6
BRACKET	SB221A96063T5
FLANGES	SB221A96063T6
COUNTER FLANGE	SA182 F304
STUD/NUT/WASHER	SA193 Gr. B8/ SA194 GR. 8
GASKET	PTFE
FOUNDATAION BOLT	IS:2062 GR.B/A36



03	07.04.12	NIRAJ	DESIGN & PNEUMATIC TEST PR.MODIFIED	ALL	NVK	JPP
02	21.07.08	Shailendra	REVISED AS MARKED.	C5	DVP	DVP
01	01.04.06	HMP	DESIGN PRESSURE REVISED	A8	D.V.P.	D.V.P.
REV.	DATE	DRN BY	DESCRIPTION	REVISED ZONE	CHD.BY	APPD.BY

REF.DRG.:	-	WO.NO.:	STD		A3
DRN	Himanshu	CAD FILE:	AVC-300-012		
CHD	D.V.P.	TITLE:-			
APPD	D.V.P.	GENERAL ARRANGEMENT & FOUNDATION			
SCALE	N.T.S.	DETAIL OF ATMOSPHERIC VAPORISER			
DATE	28.08.2005	(MODEL-AVC300)			